

NEW
TRENDY
STYLES



Montage
EUROPEAN OAK™

INVIGORATE YOUR WALLS

.....
Montage European Oak products
can be used to tastefully design any
home or commercial space.





FERNO – SAN MARINO

*Montage*TM
EUROPEAN OAK





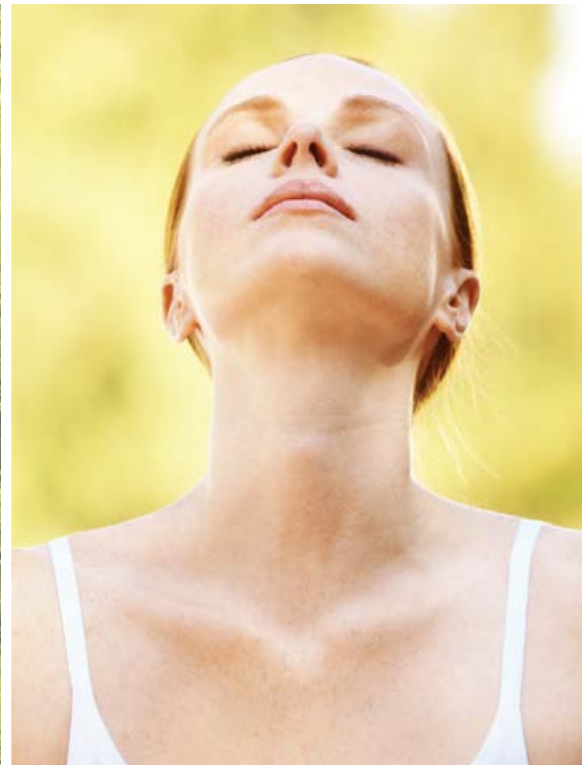
MODERN DESIGN

Old World craftsmanship and New World technology combined to create an inspiring original masterpiece. Montage's vintage hardwood flooring captures the essence and beauty of Europe's Renaissance Era with its antiquing age reclaimed style. These natural distressed textures give everlasting beauty and unique character while enhancing the natural grain patterns of European Oak for a timeless floor.

Montage
EUROPEAN OAK™

ECO CHOICE

As our commitment to protecting our environment, Montage European Oak floors are made using only the finest quality natural resources and less harvested raw wood materials than other floors. All products in this line are CARB II Compliant, Lacey Act Compliant and NAF (No Added Formaldehyde).



NATURAL OIL FINISH

- Eco-Friendly
- Easy Maintenance
- Enhances Natural Wood
- Starts & Stays Beautiful

LIVING WITH YOUR FLOORS

Finished with organic eco-friendly Zero VOC Natural Oil, the open grain finish allows for the floors to live and breathe in a healthy environment. Natural oils penetrate through the wood pores to enhance the rich elegant patina and create a long lasting durable easy to maintain floor.

Every plank is handcrafted by skilled Artisans to enhance the unique natural character unparalleled by today's technology.

QUALITY ASSURANCE

We manufacture distinctive flooring in state-of-the-art facilities with the care of our skilled craftsmen. High quality control measures are reflected in the durability and appearance of our products. Therefore, every product in the Montage line is backed by our Lifetime Structural Warranty, 30 Year Residential Wear Warranty and 5 Year Light Commercial Wear Warranty.



Montage[™]
EUROPEAN OAK



PORTOFINO - TUSCAN

V4

SUBSTANTIAL COLOR VARIATION



PORTOFINO – TUSCAN

DEEP RICH COLOR TONES

Selected styles in the Montage line are produced by a unique thermal process to achieve the deep rich color visuals. Wood is a natural product and each plank will react differently to this process resulting in color variations. This kind of variation helps display the true wood characters and is one of the most desired attributes in hardwood flooring. This unique process highlights light to dark color tones that complement each other in your home.

Each style in the Montage line is labeled with one of the ratings on the left to help you select the perfect flooring that fits your design style.

COLOR VARIATION RATINGS

V3

MODERATE COLOR VARIATION

Color differences are apparent but not excessive. The variation in color offers a good balance of character without taking away too much attention. This makes a perfect flooring for dining rooms and bedrooms.

V4

SUBSTANTIAL COLOR VARIATION

Colors can vary extensively from plank to plank. Interior designers love this kind of flooring due to the high contrast effect it delivers. V4 rated products are best installed in living rooms for impressing guests.

Montage
EUROPEAN OAK™



LAUREL - MILANO



Laurel

Wide plank textures give an everlasting beauty and unique character while enhancing the natural grain patterns of European Oak. Reminiscent of Old World décor, Laurel's select premium grade with minimal character combines a hint of modern inspiration for a timeless floor.

.....

DIMENSIONS

9/16" x 7-1/2" x 72" RL

WEAR LAYER

3mm

TEXTURE

Open Grain

FINISH

Natural Oil

EDGES

Slight Bevel

MOISTURE

8% - 10%

PACKAGING

31 SF/Carton

INSTALLATION

Glue, Float or Staple*

APPLICATIONS

Flooring & Wall Panels

*For staple installations, please refer to the installation addendum for details on glue assist spread recommendations.

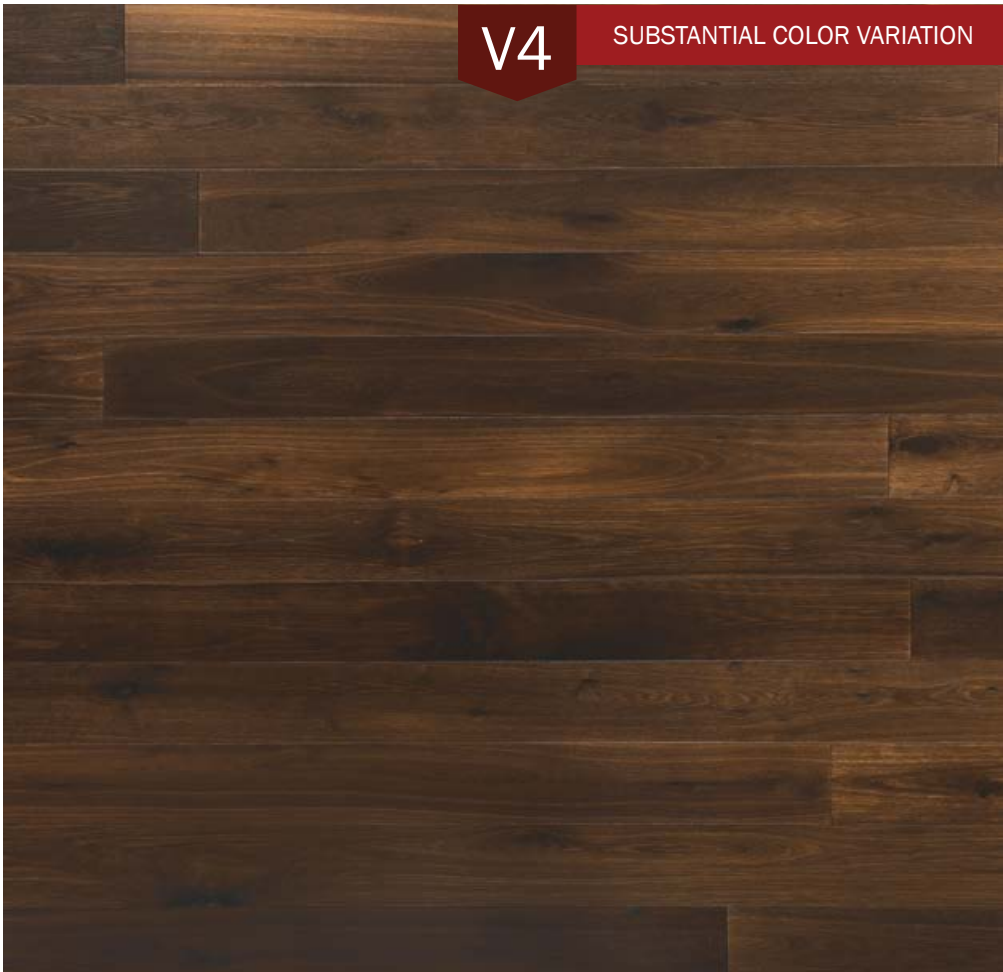
Montage
EUROPEAN OAK™





V4

SUBSTANTIAL COLOR VARIATION



GENOA

.....
HL9750GE
EUROPEAN WHITE OAK

*Montage*TM
EUROPEAN OAK





V3

MODERATE COLOR VARIATION



MILANO

.....
HL9750MI
EUROPEAN WHITE OAK

*Montage*TM
EUROPEAN OAK





Baroque

Naturally distressed planks are rich in character by highlighting accented knots and hand-hewn textures. These stylish designs enhance the beauty of wood grain to create a truly original and inspiring floor. Baroque age crafted floors bring warmth and vintage style fit beautifully for any room in your home.



DIMENSIONS

9/16" x 7-1/2" x 72" RL

WEAR LAYER

3mm

TEXTURE

Distressed & Accented Knots

FINISH

Natural Oil

EDGES

Slight Bevel

MOISTURE

8% - 10%

PACKAGING

31 SF/Carton

INSTALLATION

Glue, Float or Staple*

APPLICATIONS

Flooring & Wall Panels

*For staple installations, please refer to the installation addendum for details on glue assist spread recommendations.

Montage
EUROPEAN OAK™





V3

MODERATE COLOR VARIATION



FORLI

.....
HB9750FO
EUROPEAN WHITE OAK

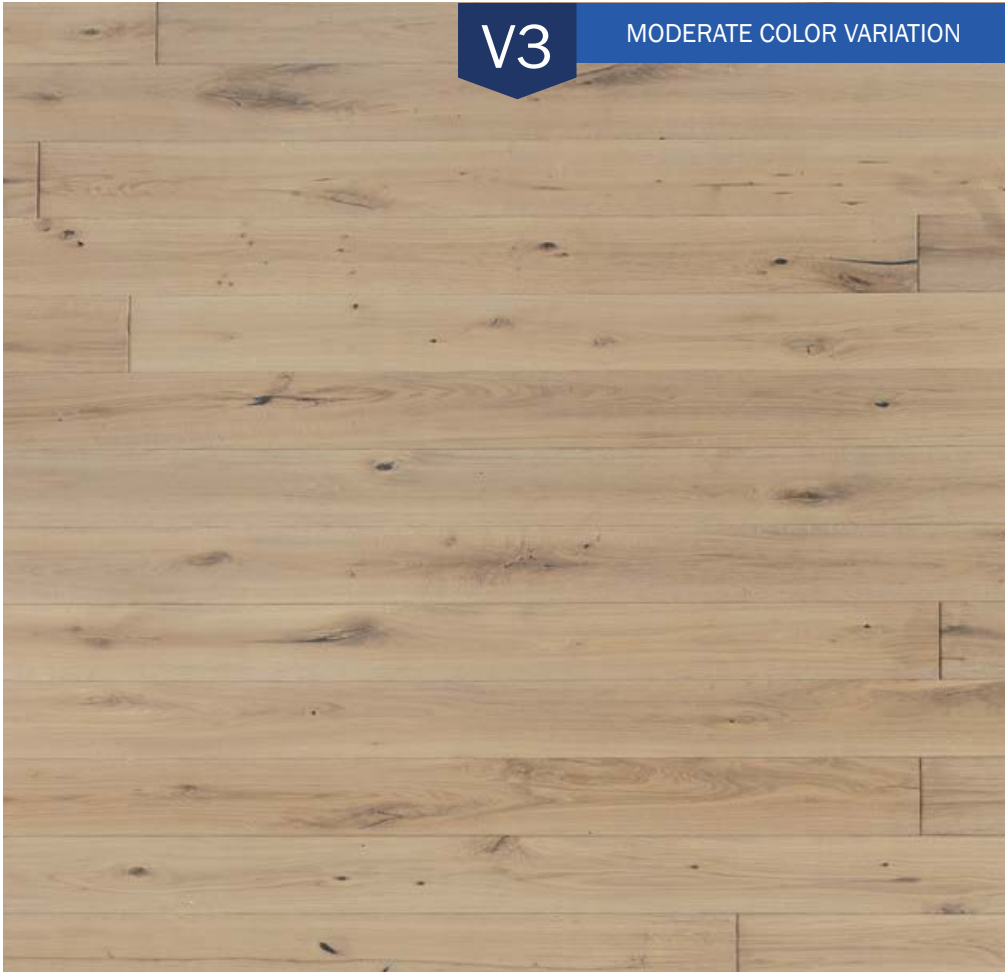
*Montage*TM
EUROPEAN OAK





V3

MODERATE COLOR VARIATION



LAZIO

.....
HB9750LA
EUROPEAN WHITE OAK

Montage
EUROPEAN OAK™





V4

SUBSTANTIAL COLOR VARIATION



MARCHE

.....
HB9750MA
EUROPEAN WHITE OAK

Montage
EUROPEAN OAK™





V4

SUBSTANTIAL COLOR VARIATION



PALMA

.....
HB9750PA
EUROPEAN WHITE OAK

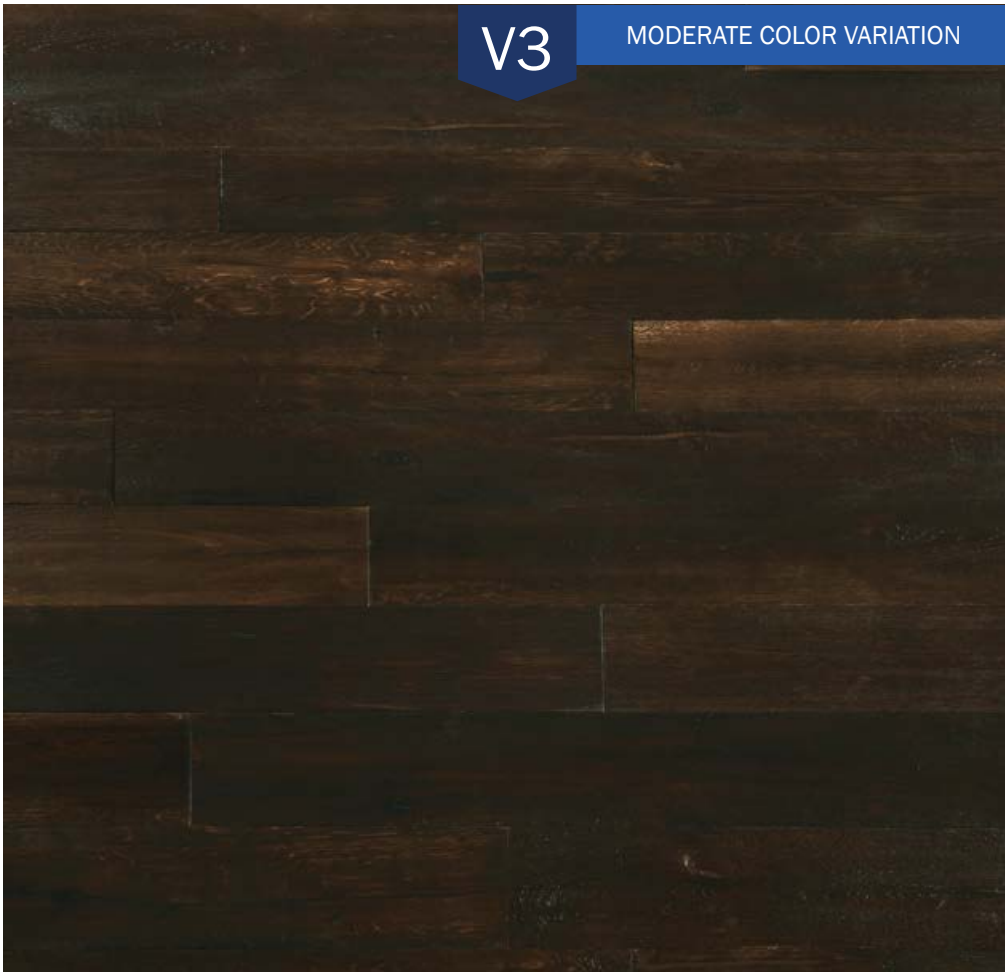
Montage
EUROPEAN OAK™





V3

MODERATE COLOR VARIATION



RUSSO

.....
HB9750RU
EUROPEAN WHITE OAK

*Montage*TM
EUROPEAN OAK





Ferno

Ferno's age reclaimed hardwood flooring maintains the true representation of European Oak by highlighting natural distressing, character, and thermal treatments.

Ferno exemplifies true timeworn design and modern innovations to create a floor that lasts for a lifetime.



DIMENSIONS

9/16" x 7-1/2" x 72" RL

WEAR LAYER

3mm

TEXTURE

Handcrafted & Light Brushed

FINISH

Natural Oil

EDGES

Slight Bevel

MOISTURE

8% - 10%

PACKAGING

31 SF/Carton

INSTALLATION

Glue, Float or Staple*

APPLICATIONS

Flooring & Wall Panels

*For staple installations, please refer to the installation addendum for details on glue assist spread recommendations.

Montage
EUROPEAN OAK™





V4

SUBSTANTIAL COLOR VARIATION

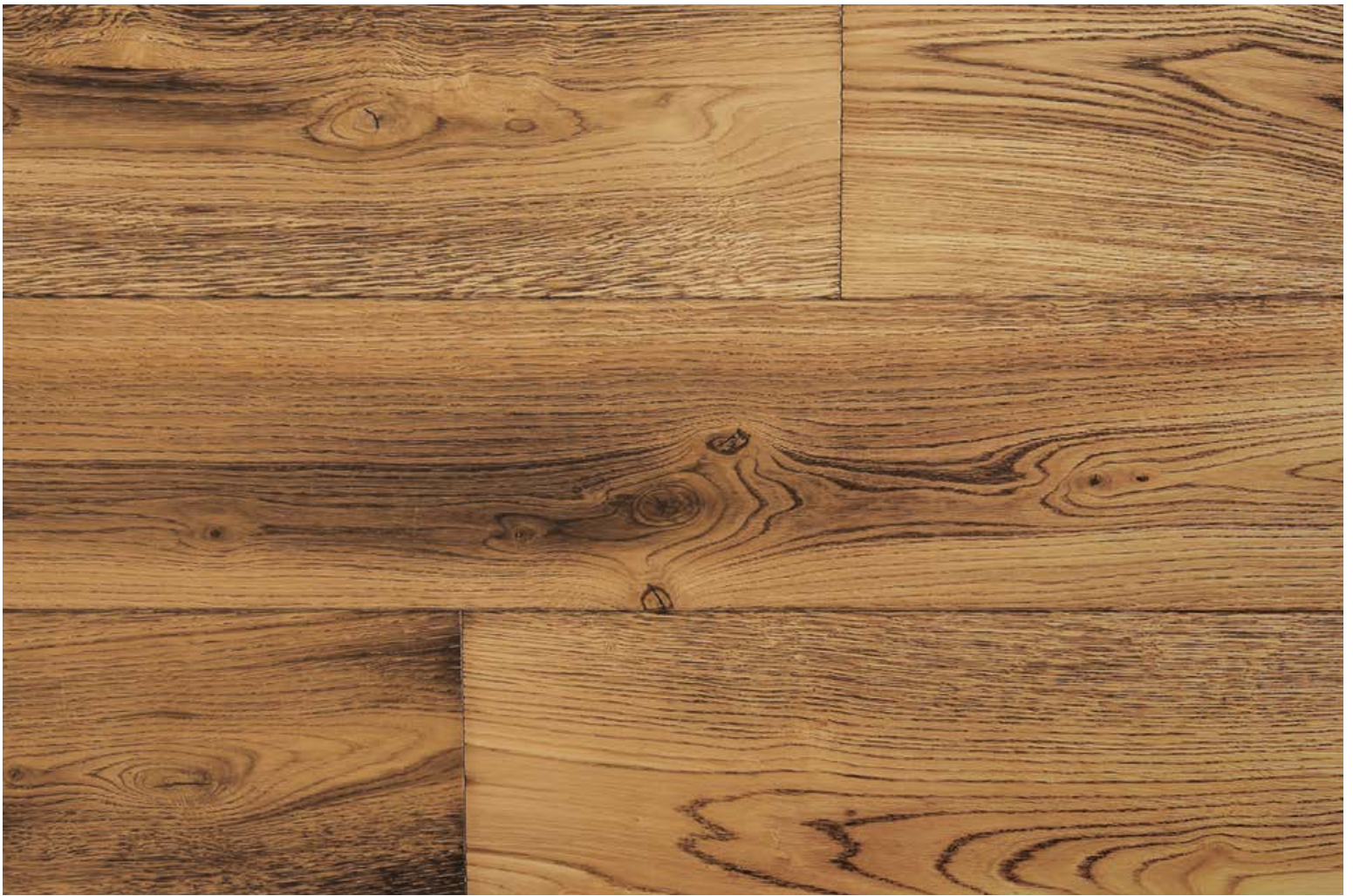


CASTILLIAN

HF9750C
EUROPEAN WHITE OAK

*Montage*TM
EUROPEAN OAK





V3

MODERATE COLOR VARIATION



NORD

HF9750N
EUROPEAN WHITE OAK

*Montage*TM
EUROPEAN OAK





V4

SUBSTANTIAL COLOR VARIATION

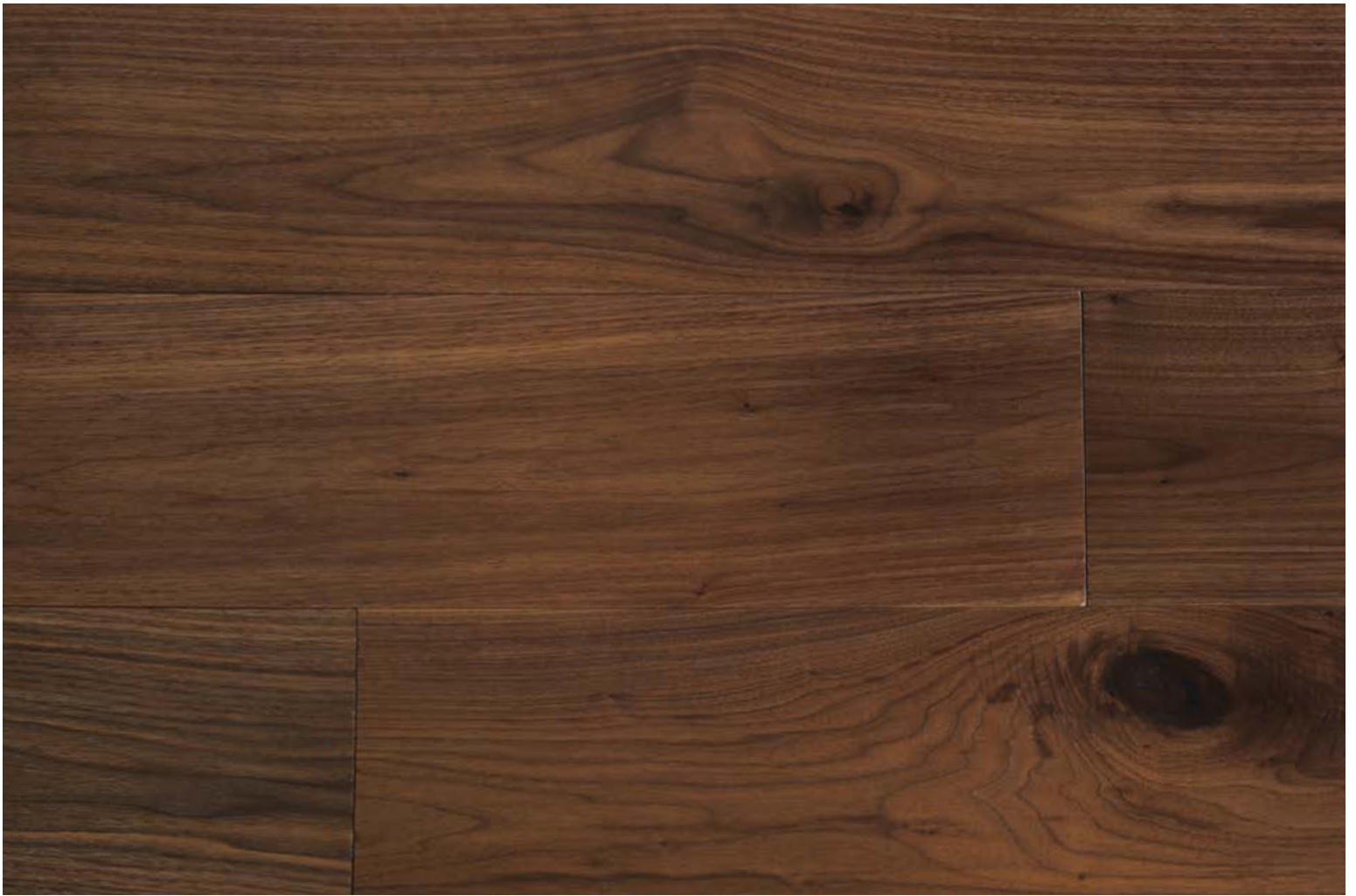


RHONE

HF9750R
EUROPEAN WHITE OAK

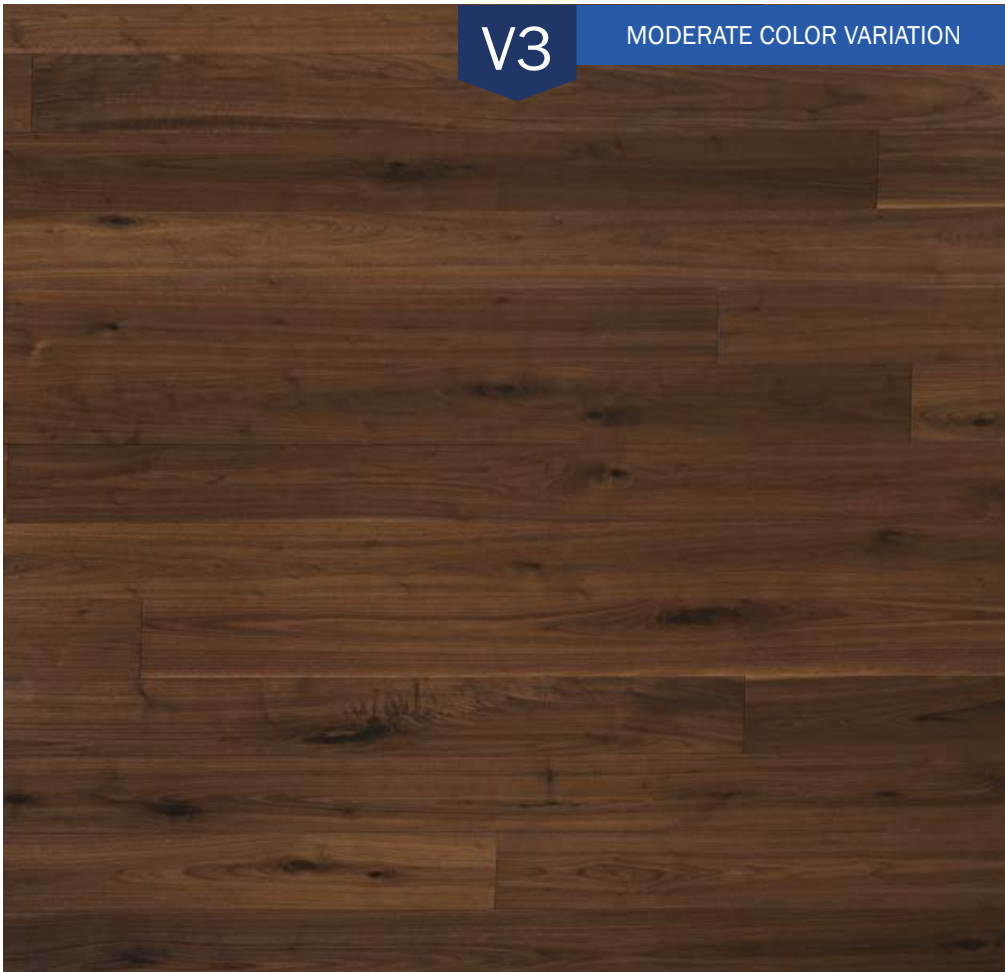
Montage
EUROPEAN OAK™





V3

MODERATE COLOR VARIATION



SALERNO

HF975WS
WALNUT

*Montage*TM
EUROPEAN OAK





V3

MODERATE COLOR VARIATION



VALENCIA

HF9750V
EUROPEAN WHITE OAK

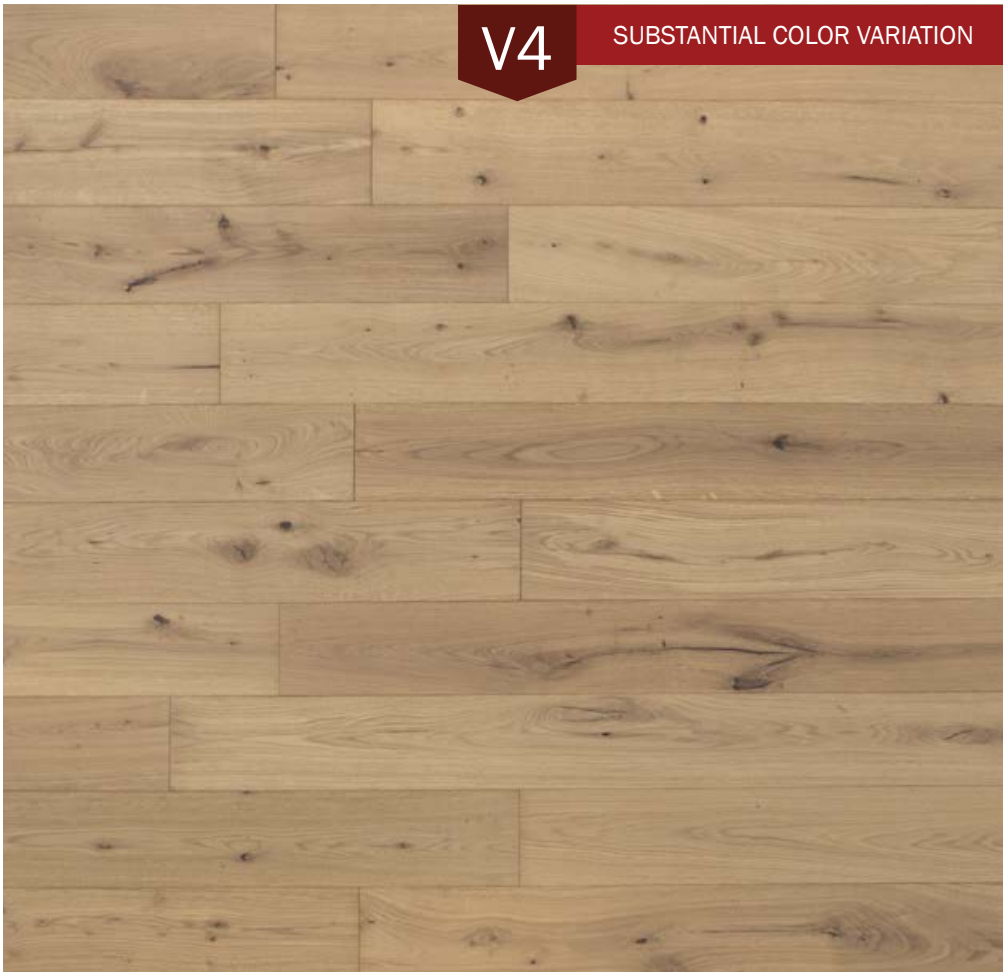
Montage
EUROPEAN OAK™





V4

SUBSTANTIAL COLOR VARIATION



CANELLI

HF9750CA
EUROPEAN WHITE OAK

Montage
EUROPEAN OAK™





V4

SUBSTANTIAL COLOR VARIATION



FIANA

HF9750FI
EUROPEAN WHITE OAK

Montage
EUROPEAN OAK™





V3

MODERATE COLOR VARIATION

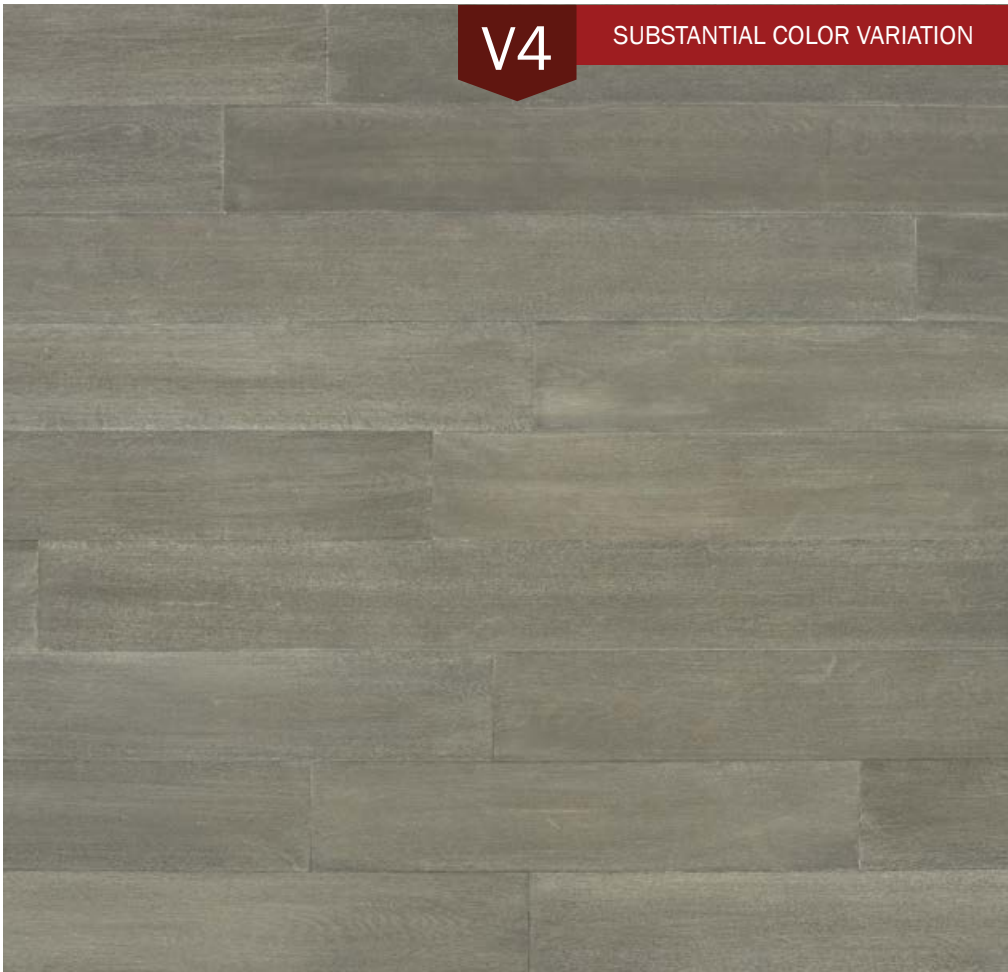


LORENZO

HF9750LO
EUROPEAN WHITE OAK

*Montage*TM
EUROPEAN OAK





V4

SUBSTANTIAL COLOR VARIATION

POMPEII

HF9750PO
EUROPEAN WHITE OAK

*Montage*TM
EUROPEAN OAK





V4

SUBSTANTIAL COLOR VARIATION



SAN MARINO

HF9750SM
EUROPEAN WHITE OAK

*Montage*TM
EUROPEAN OAK





Portofino

Hand selected planks are antiqued and aged to accent the natural stunning characters of European Oak. These natural distressed hand-hewn textures provide a rich exceptional look and tailored modern finish. Portofino captures the patina and preserves the integrity of Old World reclaimed plank floors.

.....

DIMENSIONS

9/16" x 7-1/2" x 72" RL

WEAR LAYER

3mm

TEXTURE

Age Crafted & Open Grain

FINISH

Natural Oil

EDGES

Slight Bevel

MOISTURE

8% - 10%

PACKAGING

31 SF/Carton

INSTALLATION

Glue, Float or Staple*

APPLICATIONS

Flooring & Wall Panels

*For staple installations, please refer to the installation addendum for details on glue assist spread recommendations.

Montage
EUROPEAN OAK™





V4

SUBSTANTIAL COLOR VARIATION



SIENNA

P91630SIC
EUROPEAN WHITE OAK

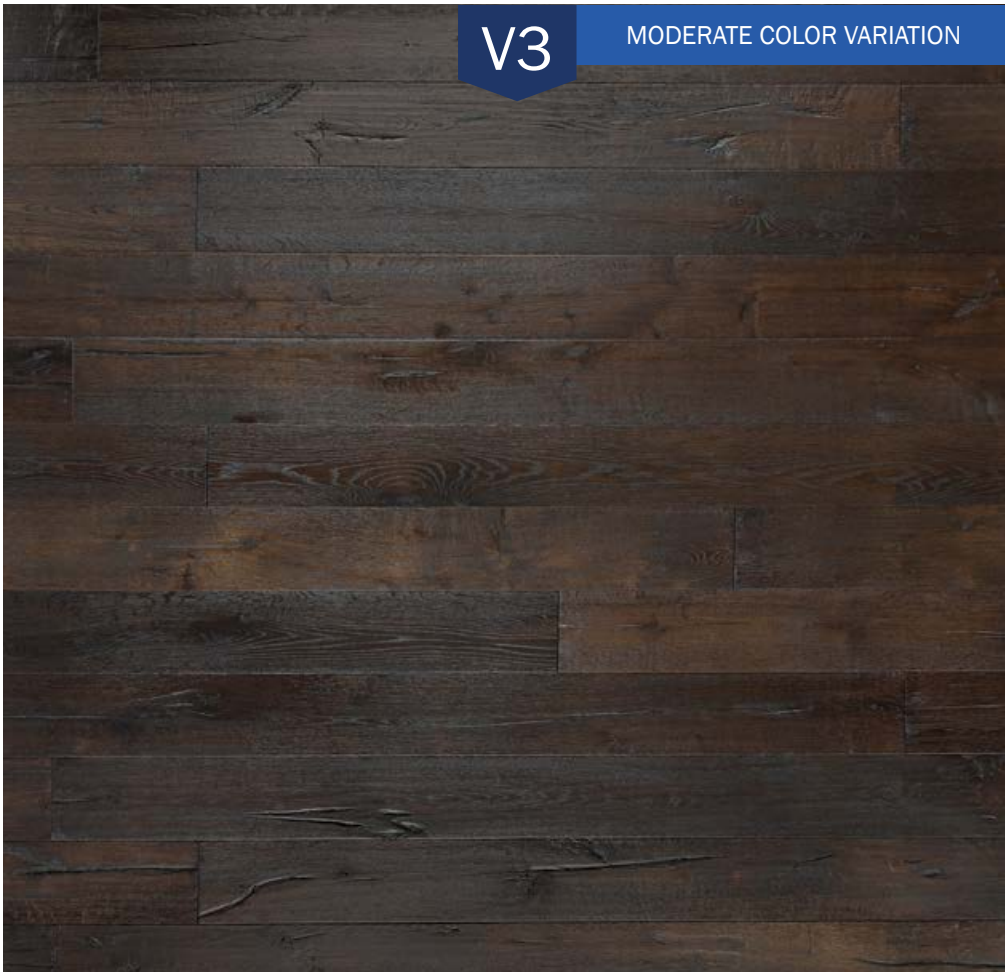
Montage
EUROPEAN OAK™





V3

MODERATE COLOR VARIATION



TAVERNA

.....
P91630TAC
EUROPEAN WHITE OAK

*Montage*TM
EUROPEAN OAK





V3

MODERATE COLOR VARIATION



TUSCAN

P91630TU
EUROPEAN WHITE OAK

Montage
EUROPEAN OAK™

EASY CARE & MAINTENANCE

INITIAL CLEANING AFTER INSTALLATION

- 1 Vacuum and/or Mop**
Clean dust and dirt off the floor with a soft brush vacuum cleaner and/or a standard dust mop.
- 2 Mop with WOCA Oil Refresher**
Mix 1 cup of WOCA Refresher Concentrate with 5 quarts of water in a bucket. Mop the entire floor with this mixture using a Terry Cloth mop.
- 3 Let it Dry**
Leave the floor to dry for 4 to 6 hours before allowing foot traffic and placing rugs.



ROUTINE CLEANING

Use Pre-Mixed WOCA Oil Refresher Spray Bottle
Spray mixture onto the floor and spread evenly with a clean Terry Cloth mop. Leave the floor to dry for 1 to 2 hours before allowing foot traffic and placing rugs.



DEMO VIDEO

Visit <https://vimeo.com/103688782>

CARE & MAINTENANCE GUIDELINES

Montage European Oak Floors are finished with a penetrating hardening oil finish that is designed to protect the new beautiful hardwood floor without a top surface film. This allows the wood to give and take moisture in harmony with the environment around it. It also provides a dirt and wear resistant surface on the floor allowing it to last a lifetime without the need to ever sand.

AFTER INSTALLATION

If the floor needs to be covered to prevent wear and dirt penetration due to additional construction, use paper or cardboard. DO NOT tape paper or cardboard to the floor. After all installation work is completed, vacuum the floor, then clean the floor thoroughly using the WOCA Oil-Refresher as instructed below before covering the floor. DO NOT use any tape including Blue Tape or Mineral Spirits when installing natural oiled floors.

INITIAL CLEANING AFTER INSTALLATION

After the floor is installed it is required to clean the floor using 1 cup of WOCA Oil-Refresher mixed with 5 quarts of water (250 ml to 5 liters of water). Mop the floor gently using a wrung cloth mop. The mop should be damp, not wet. EXCESS MOISTURE CAN DAMAGE THE FLOOR. Leave the floor to dry for 4-6 hours before taken into use. Use WOCA Oil-Refresher White on white oiled floors and WOCA Oil-Refresher Natural on all other oiled floors. Please refer to After-Care Matrix below. (PLEASE CONTACT THE MANUFACTURER FOR FURTHER INSTRUCTIONS)

MUST WATCH THE VIDEO TO LEARN HOW TO APPLY WOCA OIL REFRESHER. Please refer to demo video link for guidelines: <https://vimeo.com/103688782>

ROUTINE CLEANING

Perform monthly cleaning by vacuuming or sweeping. When the floor is dirty, use in MIXING RATIO OF HALF A CUP OF WOCA OIL REFRESHER TO 5 QUARTS OF WATER (125 ML TO 5 LITERS OF WATER) or WOCA Oil Refresher Spray Bottle.

Dip the mop into the Oil-Refresher mixture and clean the floor with the light wrung mop. If the floor is very dirty, it is recommended to work with 2 buckets: one with the solution and one with rinse water. Then mop the floor lengthwise of the boards. Leave the solution on the floor briefly in order to dissolve dirt. Remove dirty Oil-Refresher residues with hard wrung mop and then rinse in bucket with rinse water. Always wipe floor with a hard wrung out mop in order to re-establish the protective WOCA Oil-Refresher micro film. Leave surface to dry for 1-2 hours before taken into use. Use WOCA Oil-Refresher White on white oiled floors and WOCA Oil-Refresher Natural on all other oiled floors. Please refer to After-Care Matrix below. Please refer to the demo video link for Oil Refresher guidelines: <https://vimeo.com/103688782>

CARE & MAINTENANCE GUIDELINE MATRIX			
		Initial Cleaning	Routine Cleaning
LAUREL COLLECTION	Milano	Oil Refresher White	Oil Refresher White
	Genoa	Oil Refresher Natural	Oil Refresher Natural
BAROQUE COLLECTION	Russo	Oil Refresher Natural	Oil Refresher Natural
	Forli	Oil Refresher Natural	Oil Refresher Natural
	Palma	Oil Refresher Natural	Oil Refresher Natural
	Marche	Oil Refresher White	Oil Refresher White
	Lazio	Oil Refresher White	Oil Refresher White
FERNO COLLECTION	Salerno	Oil Refresher Natural	Oil Refresher Natural
	Valencia	Oil Refresher Natural	Oil Refresher Natural
	Nord	Oil Refresher Natural	Oil Refresher Natural
	Castillian	Oil Refresher Natural	Oil Refresher Natural
	Rhone	Oil Refresher White	Oil Refresher White
	Canelli	Oil Refresher White	Oil Refresher White
	Fiana	Oil Refresher Natural	Oil Refresher Natural
	Pompeii	Oil Refresher Natural	Oil Refresher Natural
	San Marino	Oil Refresher White	Oil Refresher White
	Lorenzo	Oil Refresher Natural	Oil Refresher Natural
PORTOFINO COLLECTION	Sienna	Oil Refresher Natural	Oil Refresher Natural
	Taverna	Oil Refresher Natural	Oil Refresher Natural
	Tuscan	Oil Refresher Natural	Oil Refresher Natural

FUTURE MAINTENANCE

Natural oil finished floors should never need to be re-sanded. However, over time it is necessary to apply more oil to the floor. Traffic patterns or wear areas can be easily eliminated with this step. Typically in a residential application this is anywhere from 2-5 years after initial use of the floor. WOCA Maintenance Oil provides the floor with additional hard wearing properties. Use WOCA Maintenance Oil White on White oiled floors and Maintenance Oil Natural on all others. Follow directions on the label.

COMMERCIAL APPLICATIONS

General Recommendations:

After installation in commercial areas (high traffic areas) the new floors should be first mopped with WOCA Wood Cleaner 1:40 ratios to prep the floor. Let the floor dry then polish with a coat of WOCA Master Oil and let floor dry 1-2 hours. Work in 250-300sf sections. Using a thick white polish pad, pour a capful of WOCA Master Oil into the center of the white pad and begin buffing the floor. Add small amounts of oil directly to the floor as needed. Once you have buffed the WOCA Master Oil into a section, you must remove the WOCA Master Oil from the surface. Remove any excess WOCA Master Oil on the surface using a cotton cloth underneath a clean white pad. Repeat this process with each section. Ongoing cleaning for commercial areas is WOCA Oil Refresher. However, please contact the local WOCA specialist for a customized cleaning and maintenance schedule.

Display and Showroom floors are great ways to show the beauty and character of natural oiled floors. To ensure the floors last a long time and hold up to the constant flow of traffic in a showroom or model home the Manufacturer recommends treating these floors as a commercial application by using WOCA Master Oil after installation. The Manufacturer believes this is necessary to maintain the beauty and protect the investment. Please refer to WOCA Commercial Care and Maintenance Guideline and recommend contacting WOCA for detailed step by step process.

QUICK TIPS & TRICKS

DO

- Place Felt Protector on moving furniture
- Place door mat in front of main entrance
- Protect flooring by covering wall to wall during construction with 3" overlap to avoid paint, spills, sheet rock dust, etc.
- Make sure any adhesive is immediately wiped off prior to drying

DON'T

- Don't use any tape on the Floor including Blue Tape
- Don't use Mineral Spirits
- Don't leave spills, wipe up immediately
- Don't use Microfiber (use only Cotton or Terry Cloth)



Timeless Beauty of Natural Oiled Floors

Proud Members of:



The color variation ratings on this brochure serve only as guides. Wood is a natural material containing distinctive differences in color, texture and grain. The differences caused by nature create the warmth, beauty and uniqueness of each hardwood floor. Room scenes and actual hardwood floor samples are intended as visual guides and not as the exact representation of the hardwood floors. Before you install any flooring product, we recommend that you rack out a box or two to verify that the product you have ordered is within the acceptable color range and fits your design style. Color and grade of all natural products must be inspected and approved at time of installation. Any flooring installed will be considered acceptable and no claims will be allowed based on visible appearance after installation.